

## FAST FACTS

### Number of Rooms

10

### Minimum Stay

2 nights  
(long weekends 3 nights)

### Minimum Child Age

6 years

### Check-In Time

12:30

### Check-Out Time

11:00

### Basis

Full board  
(all meals and snacks)  
Excluding drinks  
Vegetarian / Vegan

### Max. Occupancy

16

### Special Interests

Adventure  
Big 5 Safari  
Bird Watching  
Bush Walks/ Walking Safaris  
Disconnect  
Family  
Game Viewing  
Immersive Nature  
Relaxation  
Responsible Travel  
Star Gazing  
Sustainable Travel  
Wildlife

### Services

Exclusive Hire/  
Full-camp Rates  
Private game drives  
(Subject To Availability)  
Bush Walks (STA)  
Road transfer  
recommendations

### Facilities/ Activities

Battery Charging Facilities  
Off Grid  
Eco Friendly  
Malaria Free  
Game Drives  
Bush Walks/ Walking Safaris  
Deck  
Lounge Area  
Mosquito Nets  
Private Shower  
(not en-suite)

### Other

No electrical plugs  
or WiFi



## UNIT/ ROOM TYPES

All cabins are raised about a meter off the ground with shallow steps to aid accessibility. They have canvas windows on the back and sides which can be closed at night, twin beds with comfy mattresses, proper duvets and extra blankets (and a hot water bottle in the winter).

Each cabin accommodates two people, and has a private toilet and shower just a few steps away. We can accommodate one child next to their parents on a rollout underbed, so that younger children may share with their parents (up to a maximum of 3 people in one cabin).

Whilst our toilets are just a few steps away from the cabins, we do understand that some prefer not to venture outside overnight, so for each guest's peace of mind we have freshly cleaned, lidded potty for overnight use.

We do not have plug points, electricity or WiFi - but we can charge batteries for guests. We recommend bringing extra batteries for use whilst the others are being charged.

### Stand-alone Cabins

(6 units)

Set into and separated by the bush, the six standalone cabins have thatched roofs and blend seamlessly into the surrounding trees and shrubs.



### Adjoining Cabins

(4 units)

Two sets of two adjoining cabins are available, not interleading but share a wall - great for families and group bookings. These wooden cabins have tin roofs rather than thatched.





## EXPERT-GUIDED GAME DRIVES & BUSH WALKS

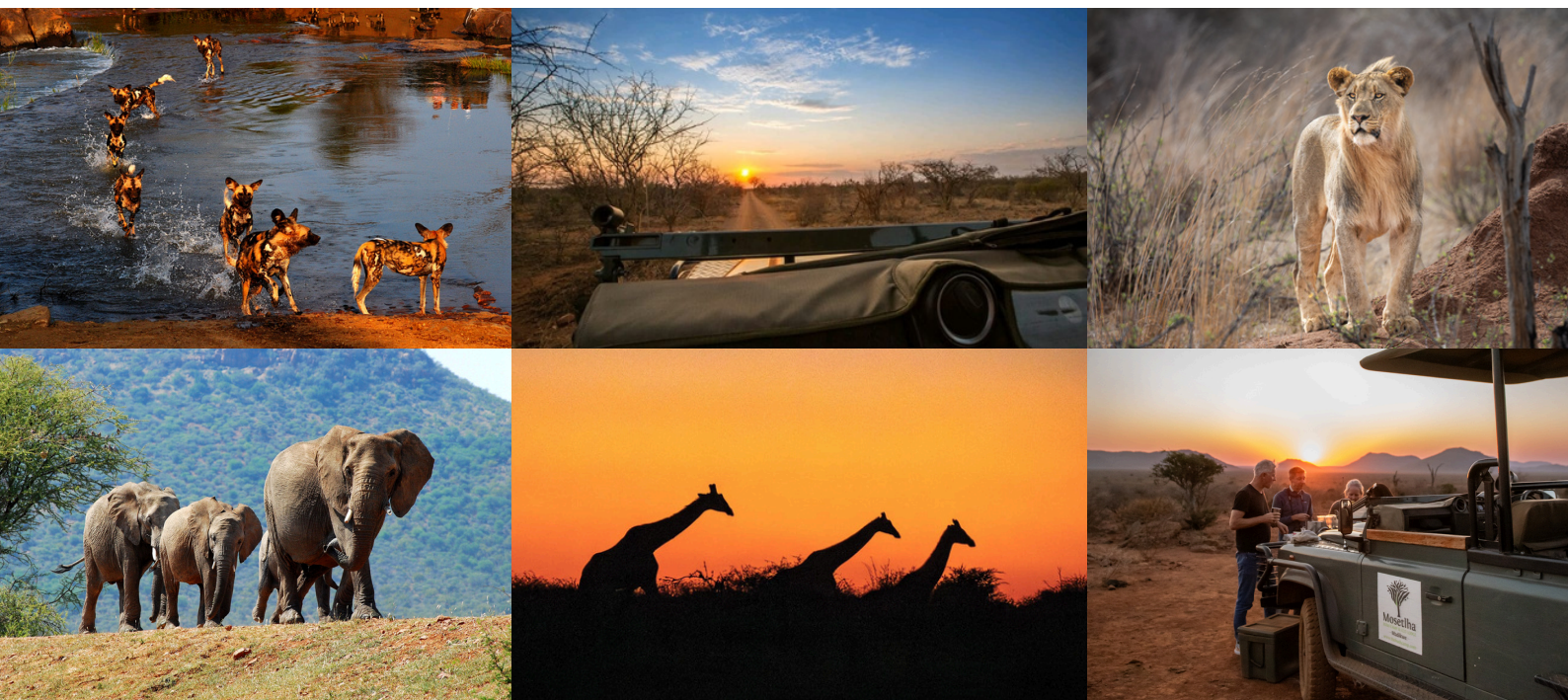
Included in the rates are twice-daily **game drives** led by our expert guides

- one in the early morning around sunrise before breakfast, and
- one late afternoon over sunset before returning for dinner.

Each game drive is around 4 hours long, with a break half way through for snacks and coffee or sundowners. Our guides are permitted to follow a confirmed sighting off road, increasing guest's chances of witnessing a hunt in progress, as well as tracking the elusive leopard, rare cheetah and endangered wild dog.

Whilst drinks are not included in our rates, we operate an honesty bar where guests are welcome to choose their drinks for the game drive, packed to take along and enjoy during the scenic stop.

In addition, now offer **guided walking safaris** right here in Madikwe Game Reserve with our newly-qualified Trails Guide, Justice! Please enquire about availability at the time of booking.



## HOT SAFARI SHOWERS

How do guests enjoy a hot shower if we don't have running water or electricity?

One of our standout innovations is the Donkey Boiler. This ingenious system heats water over a fire, which is then displaced into a bucket. The bucket is hoisted up in an outdoor shower, with a shower rose attached, ensuring guests can enjoy a hot shower amidst the wilderness. This method not only guarantees a hot shower but also exemplifies a sustainable greening concept, completely removing reliance on electric or gas water heaters.



*An environmentally friendly and sustainable experience you will never forget. Great for mental health and getting away from the hustle and bustle of working life.*



## RATES

### Until 30 June 2025

Sharing: R 4995 per person/night

Single: R 5495 per person/night

### 01 July 2025 - 30 June 2026

Sharing: R 5525 per person/night

Single: R 6225 per person/night

Providing you do not pay by credit card, we offer **commission** on the above rates.

#### INCLUDING:

- Comfortable accommodation in raised wooden cabins with twin beds (with private toilet and shower),
- All meals per day,
- Two game drives a day with our expert field guides,
- Snacks on game drives,
- Emergency medical evacuation insurance.

#### EXCLUDING:

- The Reserve Entrance Fee, currently R180.00 per person once off (Subject to change).
- Madikwe Guest Conservation Fee, currently R180.00 per guest per night (Subject to change). *Please note that this has been negotiated down from R450pp/night to be in line with Mosetlha's much lower rates* (Subject to change).

Gate entrance and conservation fees can be invoiced in advance to avoid your clients having to carry large amounts of cash with them. This is not commissionable.

#### OTHER EXCLUSIONS:

- Alcoholic and Soft Drinks. (We sell a reasonable selection of beers, wines, spirits, and soft drinks. Please note that we no longer sell single use plastic bottles of still water. We stock reusable bottles for sale, which can be filled with our delicious and safe borehole water. You are, of course, welcome to bring along your own refillable water bottle.)
- Our branded clothing.
- Staff gratuities.

Guests will need to bring cash for these expenses, as we do not have credit card facilities at the camp.

## PAYMENT & CANCELLATION TERMS

50% deposit is required to secure your dates.

The full balance is payable 30 days prior to arrival.

In the event of cancellation 31 days or more before the arrival date of your stay, the cancellation fee is 25% of the total booking value.

If cancellation is within 15 - 30 days of arrival, the cancellation fee is 75%.

If cancellation is within 14 days of arrival, the cancellation fee is 100%.

If accommodation is booked for a date within 30 days of the arrival date, the full amount is payable at the time of booking and a cancellation fee is applicable in the event of a subsequent cancellation (75% if 15 to 30 days before arrival; 100% if within 14 days).

We encourage guests to consider travel insurance to cover unexpected events.



## WHERE ARE WE

### **Madikwe West Airstrip** - Madikwe Game Reserve

One hour flight from O. R. Tambo into the reserve with Fedair.

### **Sir Seretse Khama International Airport** - Gaborone, Botswana

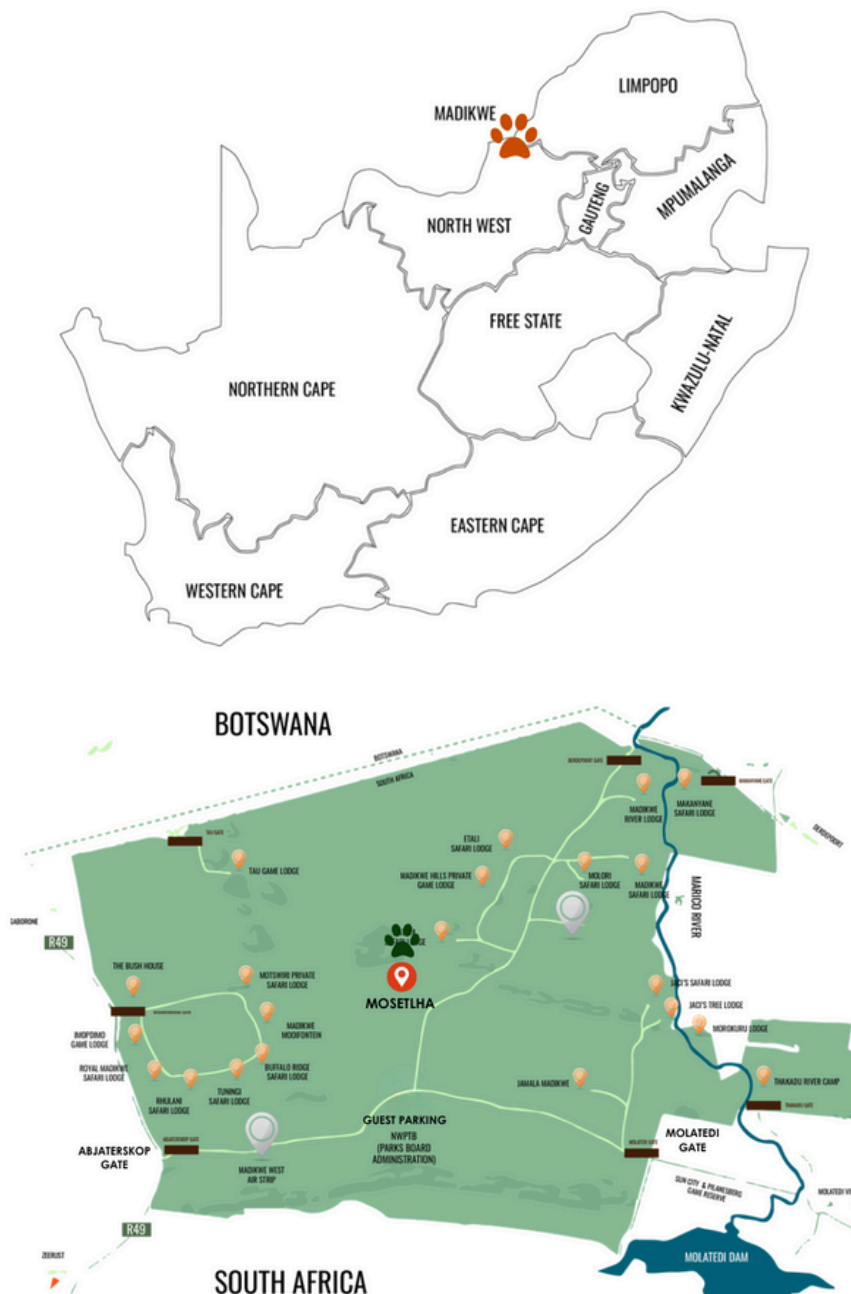
Approximately one hour's drive from Gaborone to Madikwe's Abjaterskop Gate, depending on border control at Tlokweng border post.

### **Lanseria International Airport [HLA]** - Johannesburg

3.5 to 4 hour's drive from Johannesburg to either Molatedi Gate on the western side, or Abjaterskop Gate via Zeerust on the eastern side of the reserve.

### **O. R. Tambo International Airport [JNB]** - Johannesburg

3.5 to 4 hour's drive from Johannesburg to either Molatedi Gate on the western side, or Abjaterskop Gate via Zeerust on the eastern side of the reserve.



## WHY STAY WITH US

Mosetlha Bush Camp & Eco Lodge is a rustic and intimate family-owned bush camp with raised wooden cabins, comfortable beds and clever solutions to electricity and running water. Nestled at the heart of Madikwe Game Reserve, this one-of-a-kind unfenced camp offers an immersive wilderness experience that is easy on the planet (AND the pocket), appealing to adventurous spirits seeking the soul of the wild rather than the indulgence of a luxury lodge.

What makes Mosetlha unique:

- Sought-after award-winning expert field guides attract repeat travellers from all over the world, to experience and photograph the Big 5 in the malaria-free Madikwe Game Reserve.
- Unapologetically off-grid with environmentally friendly alternatives to running water and electricity, we are the only genuine eco lodge in Madikwe.
- Thrills over frills - a chance to disconnect whilst still enjoying the full Madikwe safari experience at affordable rates.

Mosetlha's unique off-grid experience appeals to:

- Responsible travellers looking for a sustainable EcoSafari adventure;
- Wildlife enthusiasts who's hearts are set on witnessing Africa's magnificent animals in their natural habitat;
- Adventurous spirits who thrive in disconnecting, to live rather than just exist;
- Passionate photographers, craving perfectly-lit shots in the golden light;
- Families looking to reconnect away from the every-day craziness, whilst experiencing the wonders of the wild;
- Businesses looking for private retreats or intimate teambuilding experiences, free of distractions with everyone on the same level, using our deck and lapa as breakaway areas.

REMOTE . RUSTIC . INTIMATE



COME, GET THE DUST OF AFRICA ON YOUR FEET ...

